



HomeSeeker SA Property Showcase 2022



**home
seeker**
sa



Government
of South Australia
SA Housing Authority



**homeseeker.
sa.gov.au**

About

HomeSeeker SA is a state government initiative designed to reduce housing stress by helping more South Australians buy their own home or learn more about how to find an affordable property.

This property showcase features a selection of outstanding homes offered for sale on the HomeSeeker SA website in 2022.

They were delivered by private industry through partnership with the Government of South Australia through concessions in the planning system and through use of government land as part of significant urban renewal projects managed by SA Housing Authority. HomeSeeker SA actively encourages affordable home development and promotes to those seeking a foot on the ownership ladder.

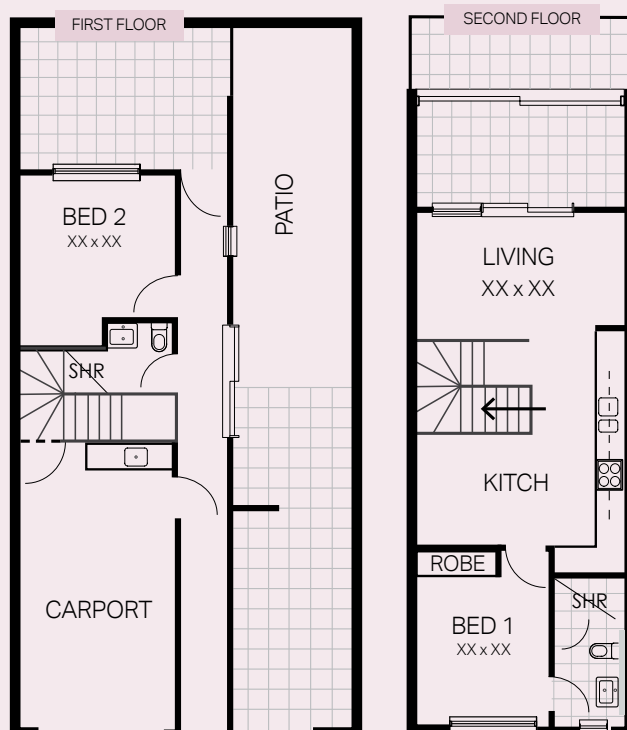
On the map





2 | 2 | 1

Floor plan



Kidman Park

Located in the lively suburb of Kidman Park, the perfect location for those who love to stay active, those who enjoy good food and wine and families with young children. This exclusive Rivergum home release on Morris Street is perfectly placed between local playgrounds, sporting facilities and popular restaurants. Public transport and childcare centres are right around the corner to suit your lifestyle needs.

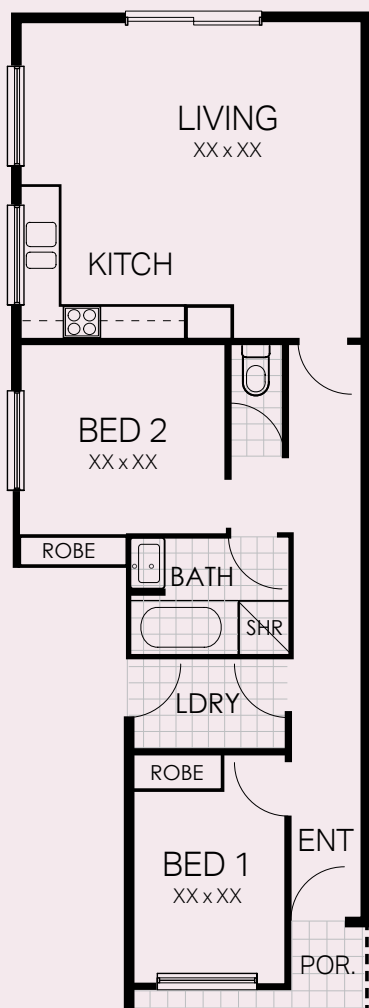
This two storey home features built in robes to all bedrooms and complete with spacious open plan living/meals/dining areas. There are 2 bathrooms, one on each level of the home along with a one car garage for secure storage, and additional shared parking available within the common driveway. The home features stainless steel appliances, reverse cycle air conditioning and secure car accommodation, all in a 6-star energy rating package.





2  | 1  | 1 

Floor plan



Ingle Farm

This home is part of the highly sought after Move Up with Metricon series and one of three homes in this exclusive Coondoo Avenue release.

Close to local facilities with a recreation centre, public library, and shopping centre all being just a short distance from your doorstep. Coondoo Avenue is in a great location for young families and those who love to stay active, with many parks and playgrounds close by including BBQ and picnic facilities.

This single storey home is complete with spacious open plan living/meals/dining areas and 2 bedrooms including built in robes. Featuring one secure carport with internal door access and an additional car space along the driveway for guests or a second vehicle. The front of the home has an easy to maintain garden while the backyard is perfect for entertaining all year round.



home
seeker
sa





3 | 2 | 1

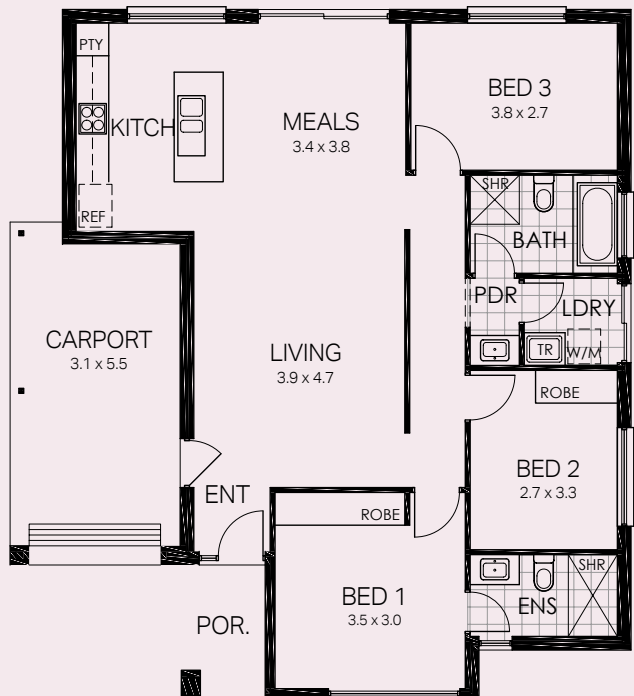


Woodville Gardens

Located less than 10km from the CBD of Adelaide, 'Trilogy' is the latest, premium living in Woodville Gardens. At the intersection of beach and near-city living, this exciting new development will provide easy living with an array of accessible shopping precincts, essential services and facilities.

Attuned to the needs of active 'right sizers', these appealing, brand-new homes from Bradford Projects strike a fine balance between clean contemporary lines and low maintenance living. Creature comforts include black and stainless steel appliances, electric heat pump hot water system, Farquhar Kitchens cabinetry and joinery and reverse cycle split system air-conditioning.

Floor plan



home
seeker
sa





2 | 1 | 1



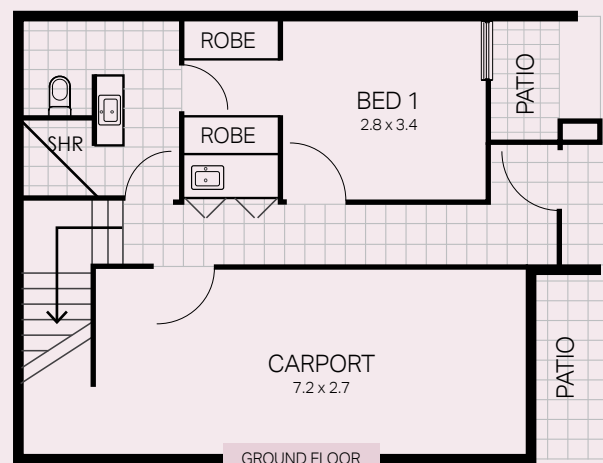
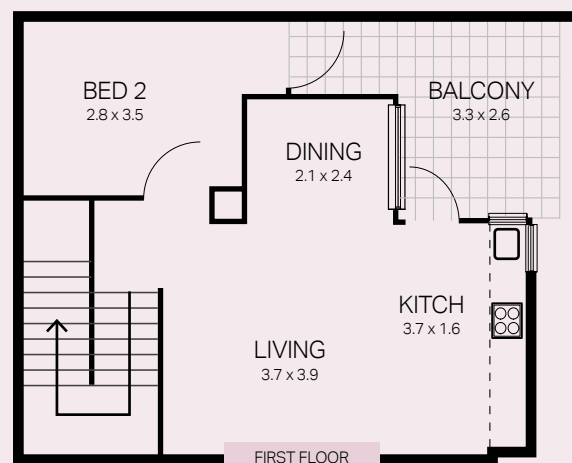
Bowden

Welcome to Tapestry at Bowden, a place where the power of community weaves through every element of its thoughtful, curated design. These brand new townhouses are perfectly located in the heart of the Bowden precinct, in close proximity to the Adelaide Parklands, Bowden Railway Station, Adelaide Entertainment Centre Tram Stop and the unique Plant 4 Bowden markets and eateries.

With the master bedroom secluded away from the hustle and bustle of daily life on the ground floor, these townhouses are the perfect choice for those seeking a home that is both practical and thoughtful in its design. The second floor includes an open plan kitchen, living and dining area that seamlessly connects to the balcony, as well as a second bedroom – ensuring ample space to entertain and relax.



Floor plan





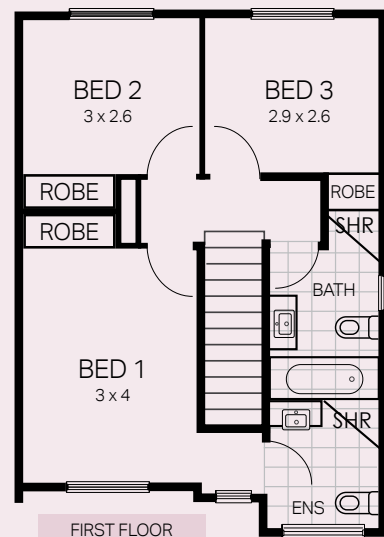
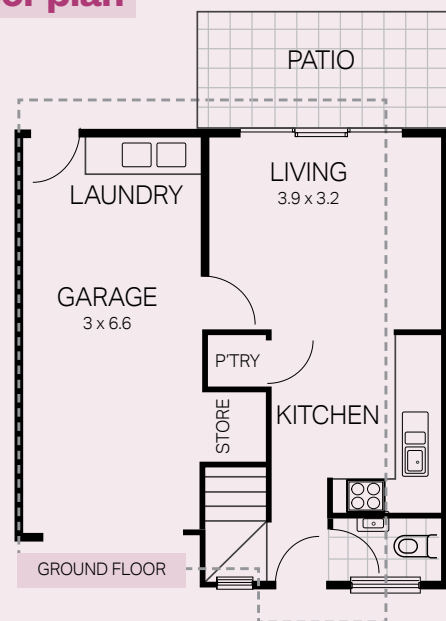
3  2  1 

Campbelltown

Located within the East Marden Primary School zone and only approximately 500m from the convenience offered by the Paradise O-Bahn Bus interchange, these stylish architecturally designed 3 bedroom homes built by award-winning builder, Lofty Building Group, offer a great low maintenance lifestyle coupled with quality finishes throughout.

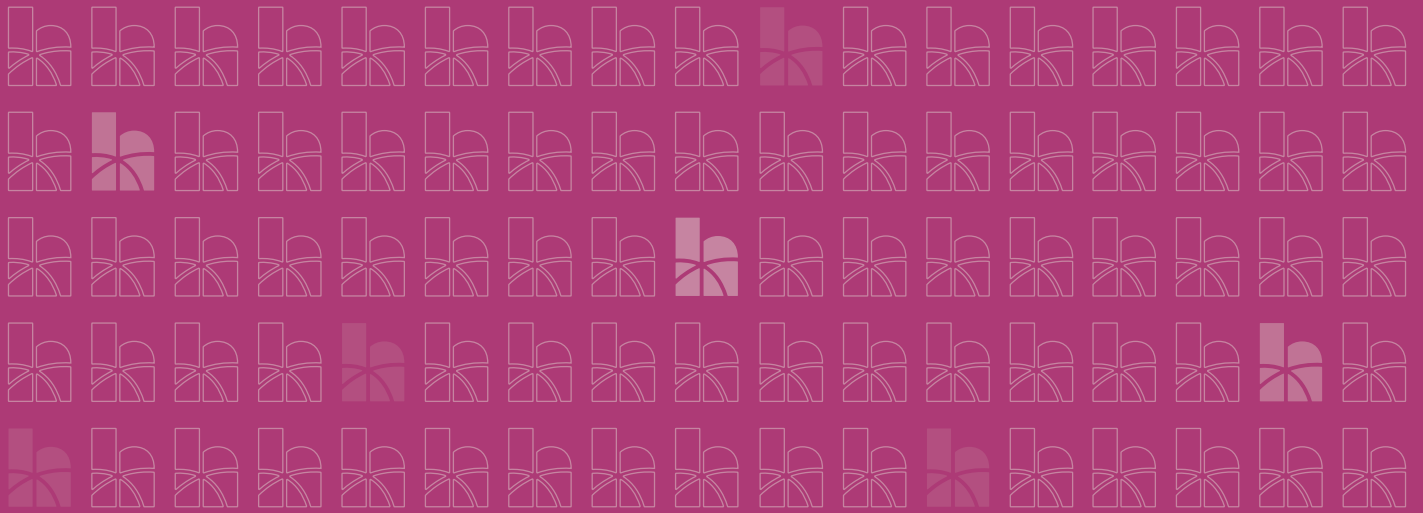
The master bedroom has a generous sized built in robe and ensuite. Bedrooms 2 and 3 both have robes as well and are of generous proportions. The kitchen is fitted with stainless steel appliances will be the hub of the home opening into the living and dining area with sliding door access to the rear garden. The home features quality floating timber floors in the downstairs living/kitchen areas, and wall to wall carpets to the staircase and bedrooms.

Floor plan



home
seeker
sa





**Our goal is to make
home ownership
possible for more
South Australians.**



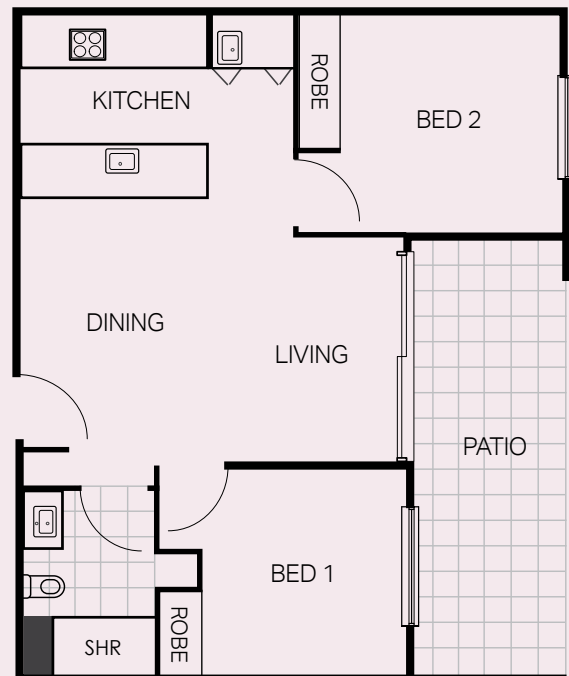
2 | 1 | 1

Glenside

Glenside offers a number of elegant homes surrounded by the beauty of established gum trees and native flora. With park views to the north and Hills views to the east, residents will enjoy the greenery and filtered light of Glenside's botanic setting, including the community park and linear reserve below. With ample green space at the door, residents can explore the trails that weave through the Park Lands to Victoria Park and the CBD just moments away.

Boasting top quality finishes, 2 bedrooms, 1 bathroom and spacious living that connects seamlessly with your private balcony. Sustainability initiatives have been incorporated to allow your apartment to exist in perfect harmony with the environment. Inside you'll find large picture windows with double glazing, while outside a bold, visionary planting program complements the established botanic surrounds.

Floor plan

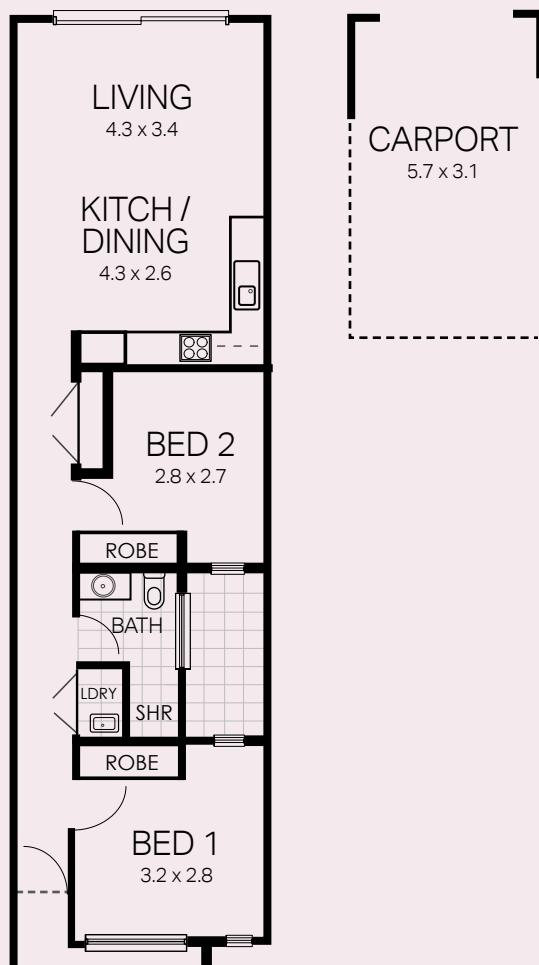




2 | 1 | 1



Floor plan



Morphettville

The Nilpena Avenue Townhouses in Morphettville bring together low-maintenance lifestyle and contemporary, designer spaces in this sought-after pocket of Adelaide. You'll have the time to do more, see more and enjoy more of a life well-lived

The Vieira is a unique, compact design with spacious living and entertaining. The designer kitchen provides a functional entry point to the open plan area, and includes all the features you need for a low-maintenance lifestyle where you can sit back, relax and enjoy life.

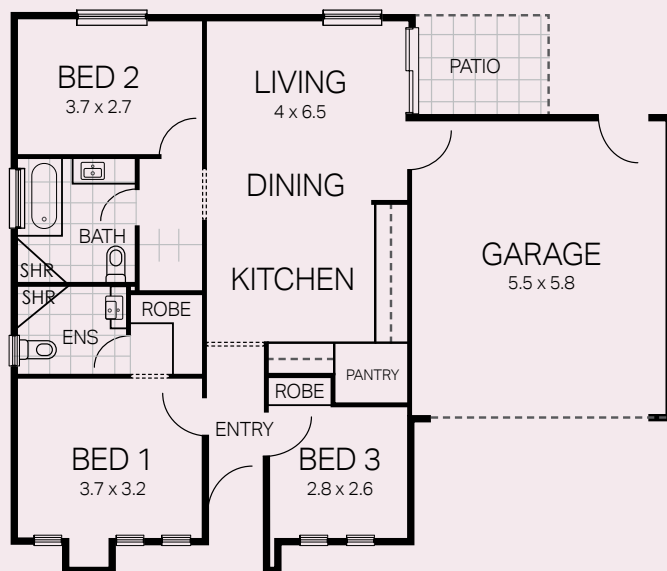
Only 8kms south-west of Adelaide, Morphettville Townhouses presents an ideal lifestyle between the city and sea, shops and cafes, parks and trails, connectivity and transport on your doorstep.





3 | 2 | 1

Floor plan

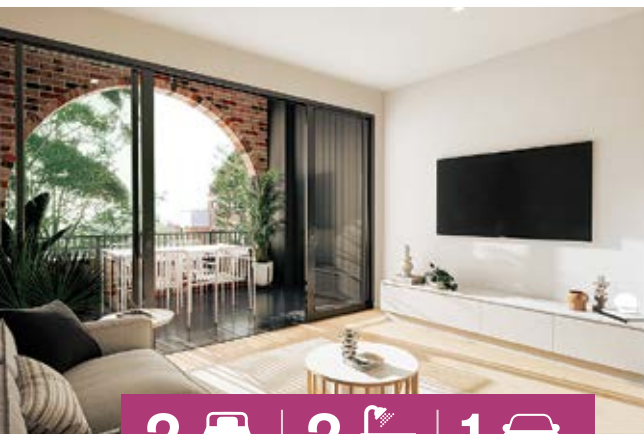


Seaford Heights

The 'Essence' release located at Vista, Seaford Heights comprises of architecturally designed 3 bedroom homes with a double car garage, and a high standard of inclusions that leaves nothing more to be desired. Buyers have the choice of up to three different carefully curated interior colour schemes; quartz, sandstone and zinc.

Just minutes from Adelaide's beautiful south coast, the development has been masterplanned to create a desirable balance of quality new homes and wide-open spaces. You will love your healthy lifestyle here; enjoy walks at the beach, green parks, playgrounds and plenty of bike paths. Vista has an established town centre that has fast become the hub of a community that you will be proud to belong to. It is the ideal place to raise a family. The town centre is home to an Aldi supermarket, a gym, a childcare centre, a medical clinic and much more.





2 | 2 | 1



Taperoo

The Heritage Collection townhouses at Fort Largs feature two bedrooms, two bathrooms and overlook a future reserve. Located adjacent to Fort Largs' Historic Drill Hall, homes in The Heritage Collection have been architecturally designed to seamlessly connect the past and the future. Your new Heritage Collection home will feel like the perfect balance between modern design with all of the latest fittings and fixtures included, while also boasting an appreciation of the sites history.

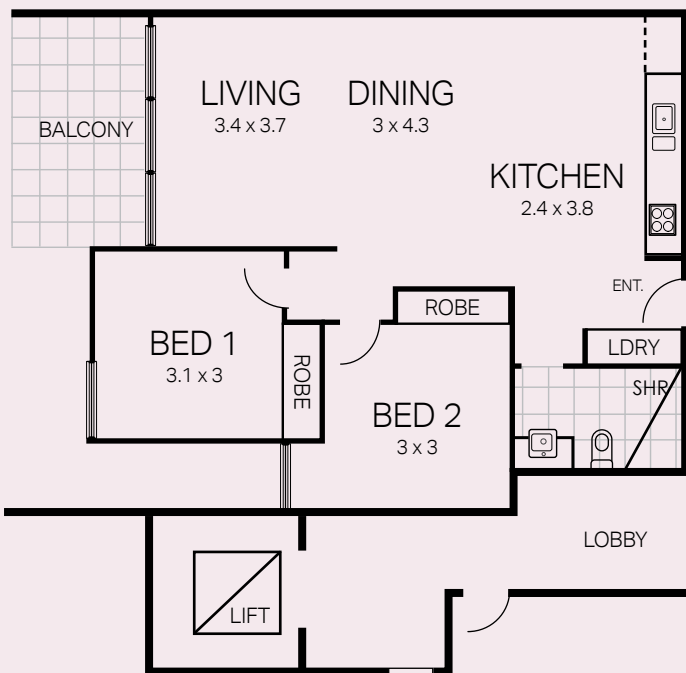
One of the best things about living at Fort Largs, is that it provides the unique opportunity for you to live, work and play in a historically significant, yet untouched piece of Adelaide's metropolitan shoreline. Located just 30 minutes northwest of the Adelaide CBD, Fort Largs will be an aspirational benchmark in coastal living.





2 | 1 | 1

Floor plan



Tonsley

The MODO Apartments at Tonsley deliver 6 storeys of smart-space floorplans including 1 and 2 bedroom affordable apartments each brimming with high-quality finishes and enticing balcony views over a manicured reserve. Every MODO apartment features high-quality fixtures and fittings including Smartstone benchtops, Smeg appliances, split system reverse cycle air-conditioning, built-in wardrobes, ceiling fans to bedrooms and designated car parking.

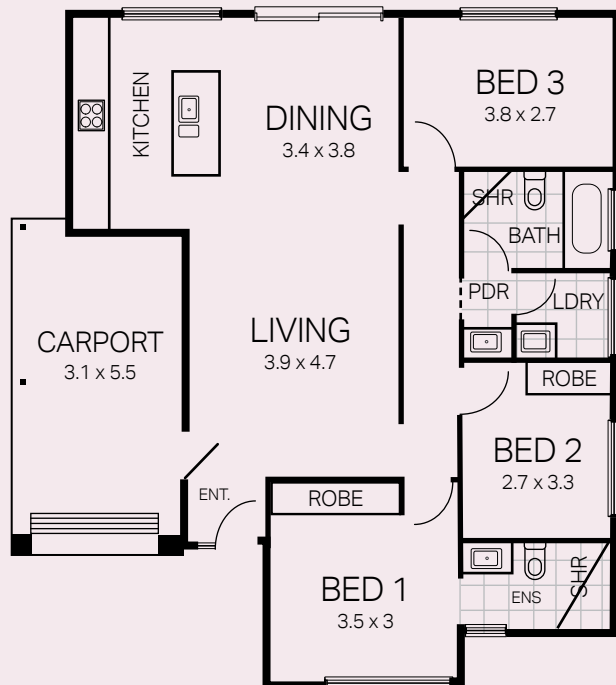
MODO's distinctly 'Tonsley' aesthetic fits beautifully into the Innovation Districts' skyline with an industrial-chic style. You'll find yourself within easy reach of Tonsley's future retail precinct, public transportation and central reserve all at your fingertips. Tonsley is located near everything that matters - the city, the beach, Westfield Marion, Flinders Medical Centre, and Flinders University.





3 | 2 | 1

Floor plan

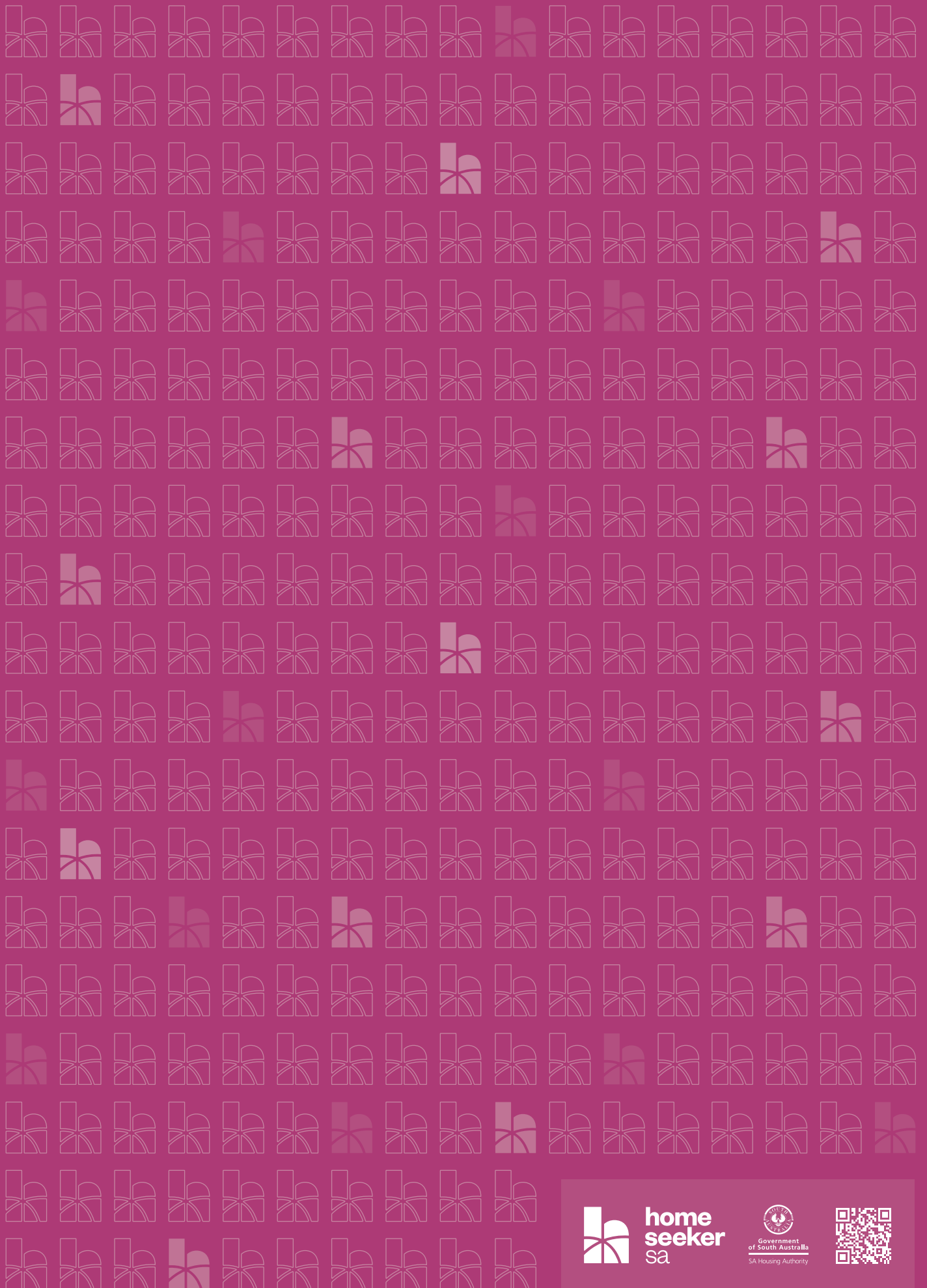


Woodville West

Proudly built by Bradford Homes, 10NW is the epitome of affordable luxury located just 10km from Adelaide's CBD. This exclusive release of contemporary townhouses feature open plan living spaces and functional layouts. With quality finishes throughout, these residences provide you with all the modern conveniences to seamlessly integrate with your lifestyle. as well as a second bedroom – ensuring ample space to entertain and relax.

Located in the heart of the Adelaide's west - public transport connections are a short stroll away offering convenient travel to the city centre and beyond. Mere minutes to Westfield West Lakes, great local schools and recreational facilities.





**home
seeker**
sa



Government
of South Australia
SA Housing Authority

